



# Support for Housing Brokerage

Personalised housing and support

**H&SA**  
Housing and Support Alliance

Steve Harris, Tammy Murray, David Abbey

---

# What is Housing Brokerage?

Supporting individuals and groups to get the kind of housing and support they want

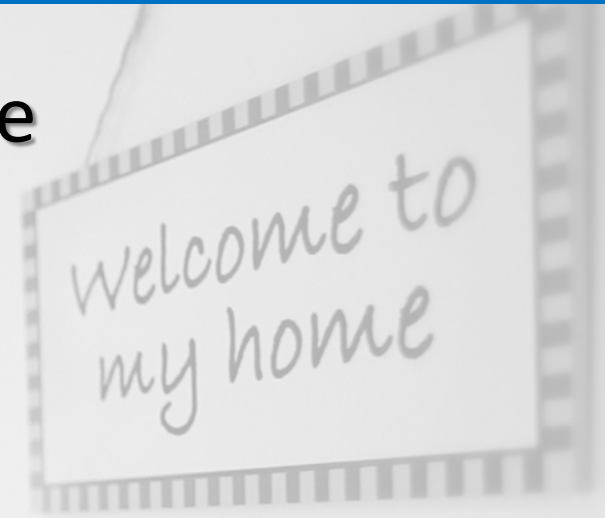
- Help people understand the options
- Identify what option will work best in the circumstances
- Design a solution
- Negotiate with partners
- Resolve conflicts
- Secure funding
- Deal with legal issues



# Brokerage Delivery

## What does it require

- Requires Focus
- Requires passion
- Requires skill and commitment
- Willingness of key people and agencies
- Requires working together



# Key aims of a Brokerage Service

Could

- Support customers to access a range of housing options
- Support customers to move on to more independent living
- Promote equality and community inclusion
- Offer practical way's of delivering personalised solutions in a cost effective way

# Who Benefits ????

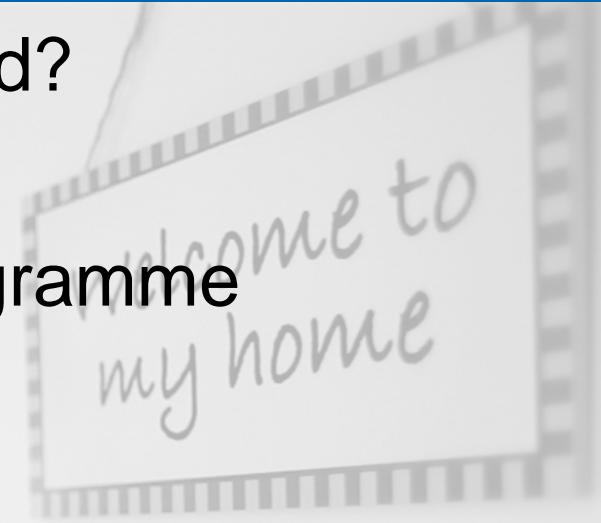
## Win - Win situation

- Offer practical way's of delivering personalised solutions in a cost effective way
- The customer is happy
- Can support reducing the need of using more expensive services



# What is H&SA offering?

- Initial scoping – what do you need?
  - Recruitment Support
  - Broker and Partner Training Programme
  - On-going mentoring support
  - Resource pack
  - Access to appropriate Associates
- 
- We would expect each programme to use 9 days direct support, costed at £5000/£4000



# Questions please



Thank you for your attention!

[www.housingandsupport.org.uk](http://www.housingandsupport.org.uk)

