



# Better Care Fund and Beyond

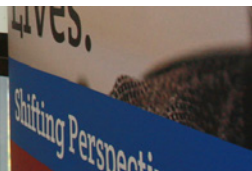
CONFERENCE

THROUGH CREATIVE COMMISSIONING & PROVISION



**The Library of Birmingham**  
Centenary Square, Broad Street  
Birmingham, B1 2ND

**Thursday 12th June 2014**  
9.30am – 4.30pm



# About this conference

This event is being hosted by the New Economics Foundation, the Centre for Welfare Reform, the Community Gateway CIC and the Housing and Support Alliance. It is about promoting approaches to commissioning that give people with disabilities, mental health and older people a valued place in their communities.

We will be exploring non-traditional, person centred and creative approaches which will enable local areas to achieve maximum impact and make best use of money and resources across local government and health services.

If you are brave enough to be challenged, you will go away from this event with a range of simple but effective ideas related to health and care commissioning and provision.

## What is the Better Care Fund?

As part of the government's drive to deliver local efficiencies across health and social care services and an excellent experience of care for patients and service users, a £3.8 billion Better Care Fund will be made available in 2015/16 to support the integration of health and social care services locally.

As part of accessing this money local authorities and the local NHS will have to commit to joint commissioning, better data sharing, seven day working across health and social care services and the protection of social care services. They are also required to have an accountable lead professional for packages of integrated care.

## Speakers will include:

**Dr Simon Duffy**, Chair of H&SA and Director of Centre for Welfare Reform

**Julia Slay**, Senior Researcher and Social Policy Programme Co-ordinator NEF

**Dr Chris Yapp**, Fellow of the BCS and Independent Consultant

**Dr Chris Howells**, Managing Director of Koru Services Group

**Professor Roger Ellis**, Emeritus Professor Psychology at University of Chester

**Vinesh Kumar**, Director of The Community Gateway CIC

## Question time

Question time will follow the familiar format and challenge our panellists with questions from the audience.

It will be chaired by Dr Simon Duffy and panel members will include: **Dr Chris Yapp, Dr Chris Howells, Vinesh Kumar, Julia Slay, Professor Roger Ellis.**

## The theme for questions will be:

*Can The Better Care Fund really help to integrate services?*

Please submit questions in advance to our panellists:

By email: [mariana.ortiz@housingandsupport.org.uk](mailto:mariana.ortiz@housingandsupport.org.uk)

By post: H&SA, Rodney Chambers,  
40 Rodney Street,  
Liverpool, L1 9AA

## Who should attend?

This event is for colleagues from local authorities, health and wellbeing boards, clinical commissioning groups, health, housing and social care providers who are working to commission or provide services for people with disabilities, mental health and older people.

We have a limited number of free places for people who use services and families that we will allocate through a draw. Please contact [mariana.ortiz@housingandsupport.org.uk](mailto:mariana.ortiz@housingandsupport.org.uk).

## Workstreams:

1. **Community and Social Innovation** / Dr. Simon Duffy and Dr. Chris Yapp
2. **Collaborative Commissioning** / Dr. Chris Howells
3. **Addressing the “cause of causes” – the best way forward for Health and Social Care** / Richard Haynes and Vinesh Kumar
4. **Managing the Introduction of Personalisation and ISFs for People with Learning Disabilities** / Prof. Roger Ellis and Steven Rose, Choice Support
5. **Commissioning for Outcomes and Coproduction** / Julia Slay, New Economics Foundation
6. **New Approaches to Housing and Support** / Susannah Westwood and Craig Derry, Strategic ARC, Tammy Murray, Housing and Support Alliance

## Exhibiting opportunities

We will have exhibition stands available for organisations. This will provide a great opportunity to meet a wide range of commissioners, service users and other useful contacts from the sector.

If you are interested in exhibiting please contact:  
[mariana.ortiz@housingandsupport.org.uk](mailto:mariana.ortiz@housingandsupport.org.uk)

# Conference booking form

I would like to book place/s for:

**Better Care and Beyond Conference on Thursday 12th June 2014**

The Library of Birmingham, Centenary Square, Broad Street, Birmingham, B1 2ND

- H&SA Member: 1 free place
- H&SA Member: 1 subsidised place @ £95 each
- Non-member places @ £150 each
- Total number of places
- Cheque enclosed

Total amount: £  Order reference: (invoice)

PLEASE MAKE CHEQUES PAYABLE TO HOUSING AND SUPPORT ALLIANCE

Invoice address

First name  Surname

Organisation

Job title

Email  Phone

Special access / dietary needs

## Options for booking your place:

- \* Use our Eventbrite booking page: [www.bit.ly/BCF-Conf-2014](http://www.bit.ly/BCF-Conf-2014)
- \* Print, complete and post this form to: **H&SA, Rodney Chambers, 40 Rodney Street, Liverpool, L1 9AA**
- \* Call us on **0845 456 1497**

H&SA, Rodney Chambers, 40 Rodney Street, Liverpool, L1 9AA

Tel: 0845 456 1497 Email: [enquiries@housingandsupport.org.uk](mailto:enquiries@housingandsupport.org.uk)

Booking terms: [www.housingandsupport.org.uk/terms](http://www.housingandsupport.org.uk/terms)