

# Booking form

# H&SA

H&SA Conference / Manchester Conference Centre, Sackville St, Manchester M1 3BB

I would like to book place/s for the Housing and Support Alliance Annual Conference on Thursday 20th November 2014

H&SA Member 1 free place      H&SA Member 1 subsidised place: £100

H&SA Member 4 discounted places for £300  
(Bring a commissioner / provider / service user / family member)

Non-Member places at £175  (number of places)

4 x Non-Member discounted places for £525

Total Number of places

Dinner & Dance tickets at £40  (number of tickets)

Total amount £       Order reference (invoice)

Please **choose the 2 seminars** you wish to attend:

Seminar 1      Seminar 2      Seminar 3      Seminar 4      Seminar 5

PLEASE MAKE CHEQUES PAYABLE TO HOUSING AND SUPPORT ALLIANCE

Invoice address

First name       Surname

Organisation       Job title

Email       Phone

Special dietary needs

## To book your place:

- \* Fill out and **click on button to email this form >>**
- \* [mariana.ortiz@housingandsupport.org.uk](mailto:mariana.ortiz@housingandsupport.org.uk)
- \* Fill out, print and post this form to:  
H&SA, Rodney Chambers, 40 Rodney Street, Liverpool, L1 9AA
- \* Contact us: **02036 171 842** / [enquiries@housingandsupport.org.uk](mailto:enquiries@housingandsupport.org.uk)  
For full terms: [www.housingandsupport.org.uk/terms](http://www.housingandsupport.org.uk/terms)

# H&SA

Housing and Support Alliance

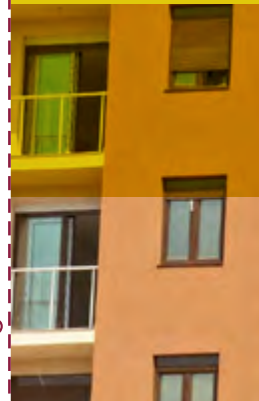


## HOUSING & SUPPORT ALLIANCE 2014 ANNUAL CONFERENCE

[www.bit.ly/hsa-2014-conference](http://www.bit.ly/hsa-2014-conference) | #hsa2014

# No Going Back

Rights and good lives for people  
with learning disabilities.



**Manchester Conference Centre**  
Sackville St, Manchester, M1 3BB

**Thursday 20th November 2014**  
10 am – 5.30 pm



## H&SA Annual Conference 2014 / No Going Back

The last 15 years have seen a positive change in the way people with learning disabilities live their lives. The mantras of Valuing People, Choice, Rights, Independence and Inclusion have been central to the development of support and services, even if change has been slow and sometimes painful.

With the current economic climate some of these values have been side-lined, less people are eligible for the support they need and those who are eligible are facing fewer or no choices. We are also seeing a worrying lack of care in the care industry with increasing reports of abuse, neglect and poor practice in all sectors of the care industry.

There has never been more need for self advocates, families and the good commissioners and providers to get together and strengthen the messages that we will not return to providing institutional services and we will uphold and promote the rights of people with learning disabilities to take an equal place in society.

**No Going Back** will focus on what the future holds for supported living and how people with learning disabilities, families and professionals can come together to break down the barriers that stop people with learning disabilities leading good and equal lives.

### Speakers will include:

**Gary Bourlet** - People First England  
(Co-Chair)

**Suzie Fothergill** - Skills for People  
(Co-Chair)

**Andrea Pope Smith** - ADASS

**Tom Noon** - Cordis Bright

**Professor Chris Hatton** - Lancaster University

**Judith North** - Orenda Consultancy

**Alan Rosenbach** - Care Quality Commission

**Caroline Tomlinson** - My Life

**Dr Simon Duffy** - Centre for Welfare Reform

**Sally Warren** - Paradigm

**Jackie Downer** - Paradigm

**Sam Sly** - Beyond Limits

**Sarah Maguire** - Choice Support

**Tim Keilty** - New Prospects

### Who should attend?

We want to find ways to break down the barriers that exist between housing and support providers, commissioners, people with learning disabilities and families. If you come to our annual conference in a group of 4 that is made up of a mix of people with a learning disability, families, advocacy organisations, commissioners and housing and support providers, we will give you one place for free. For more information: [mariana.ortiz@housingandsupport.org.uk](mailto:mariana.ortiz@housingandsupport.org.uk).

### Parallel Seminars

1. **No Going Back** : Open Door Theatre Group.
2. **The impact of the Care Act on housing & support**: Steve Harris, H&SA.
3. **Good housing is achievable**: Tammy Murray, H&SA; Jayne Knight, Lets for Life; Eric Hardman, Dimensions; John Verge, Golden Lane Housing; Graeme Jackson, Advance Housing; David Abbey, My Safe Home.
4. **Advocacy and the Care Act**: Jonathan Senker, Advocacy Partners.
5. **Managing the introduction of Personalisation and ISFs for People with learning difficulties**: Professor Roger Ellis, Buckinghamshire New University.

### Dinner & Dance

In the evening a night of entertainment with comedian Sarah Wood and a DJ providing music for after dinner dancing from 7.30pm.

### LDa Launch



The Learning Disability Alliance will be launching November 21st at the Manchester Conference Center. LDA is being established to stand up the rights of people with learning disabilities. More info: [www.bit.ly/LDa-WHY](http://www.bit.ly/LDa-WHY). To book a place at the launch: [mariana.ortiz@housingandsupport.org.uk](mailto:mariana.ortiz@housingandsupport.org.uk)

### Sponsorship and exhibiting opportunities

We will have sponsorship opportunities and exhibition stands available for organisations. This will provide a great opportunity to meet a wide range of commissioners, service users and other useful contacts from the sector. For more information please contact: [mariana.ortiz@housingandsupport.org.uk](mailto:mariana.ortiz@housingandsupport.org.uk)